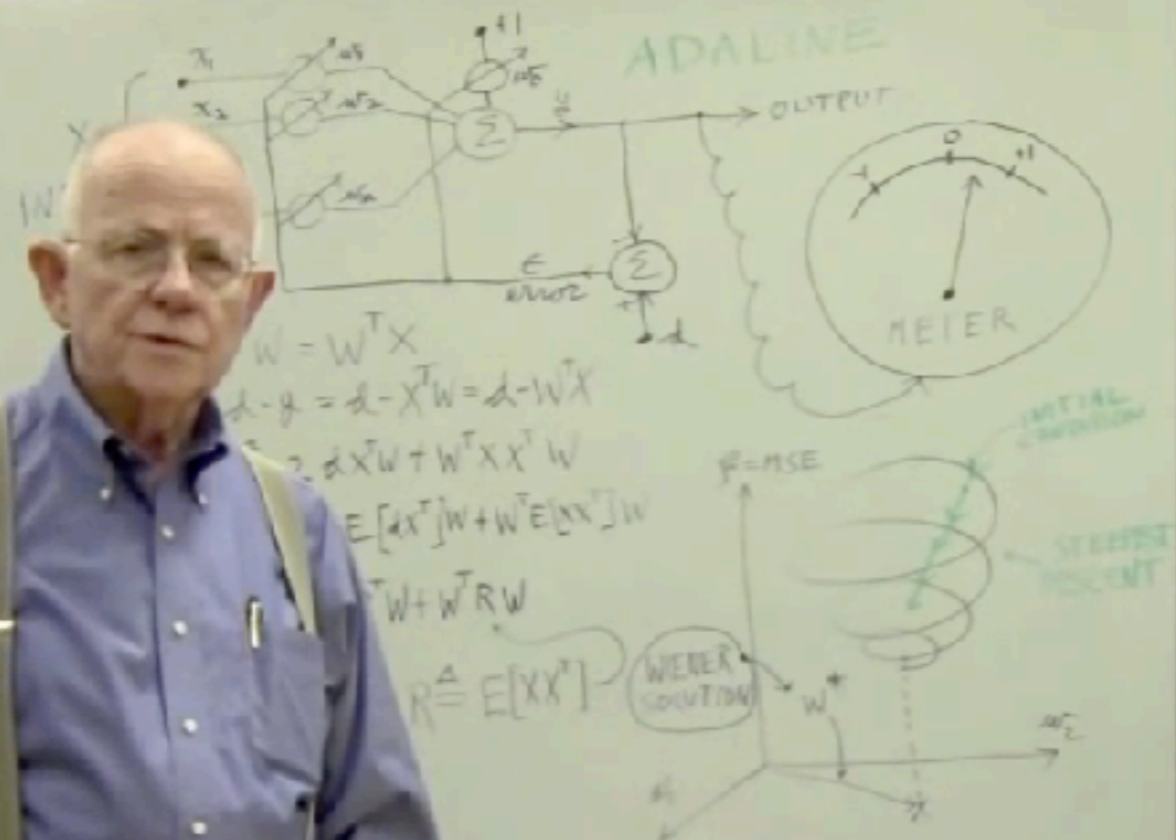
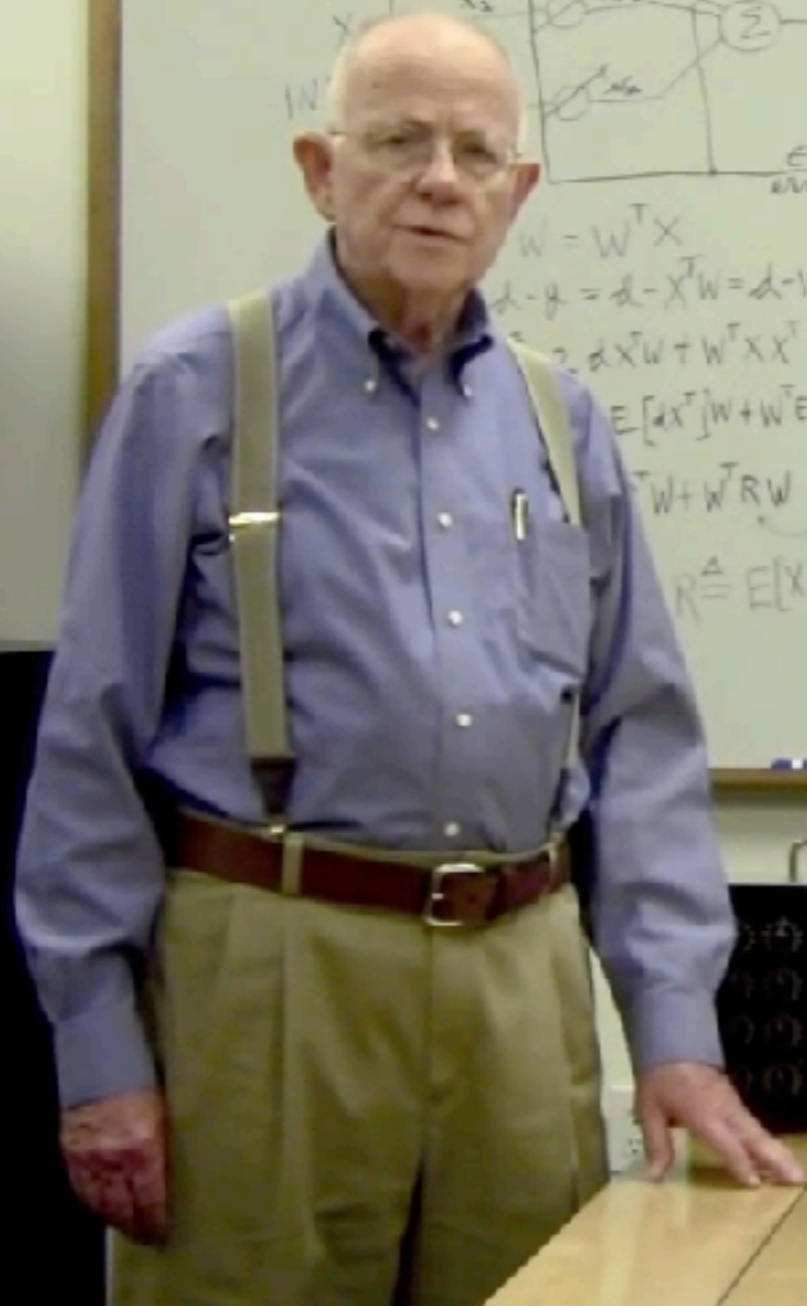


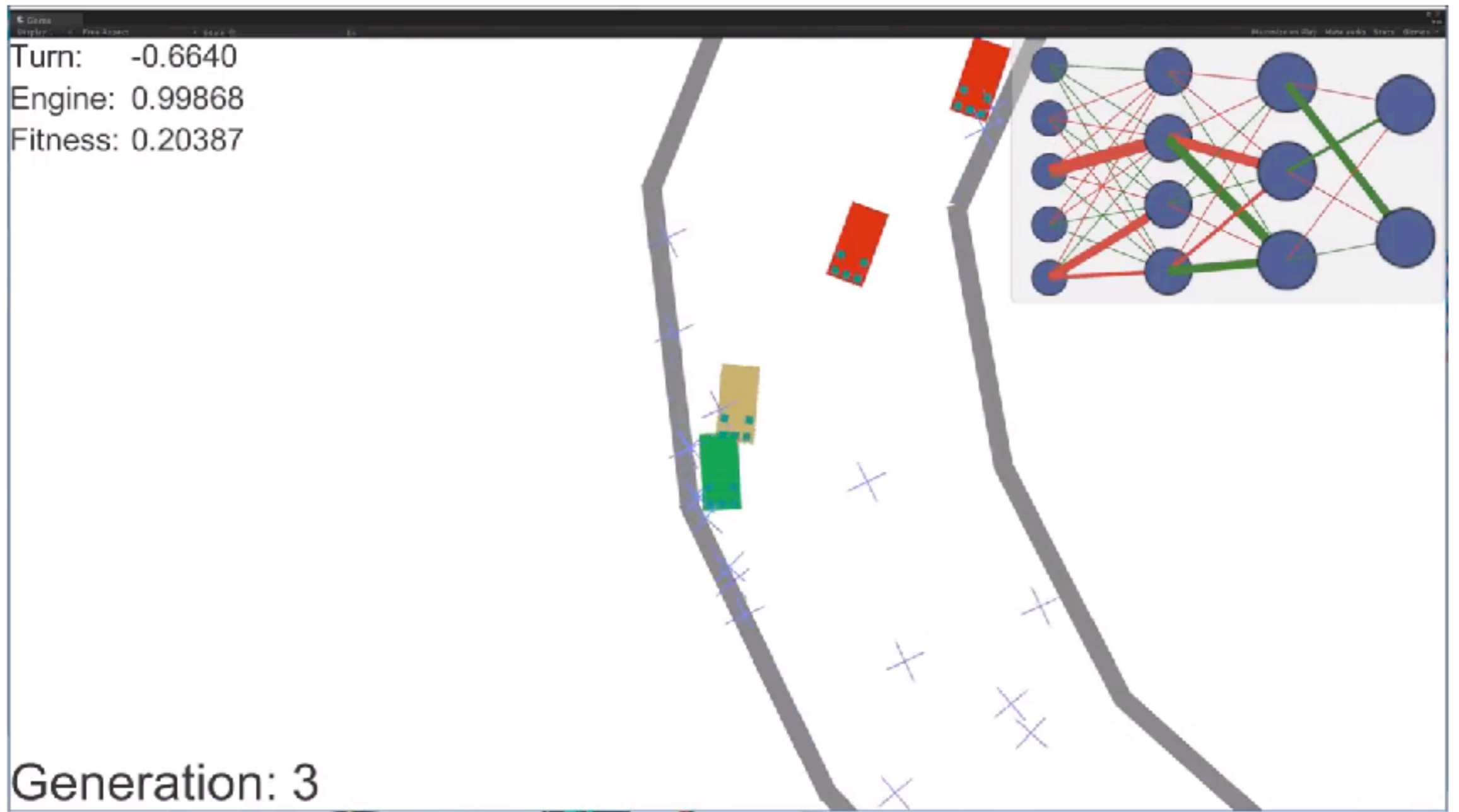
Artificial Intelligence and Mathematics



ADAPTIVE ALGORITHM

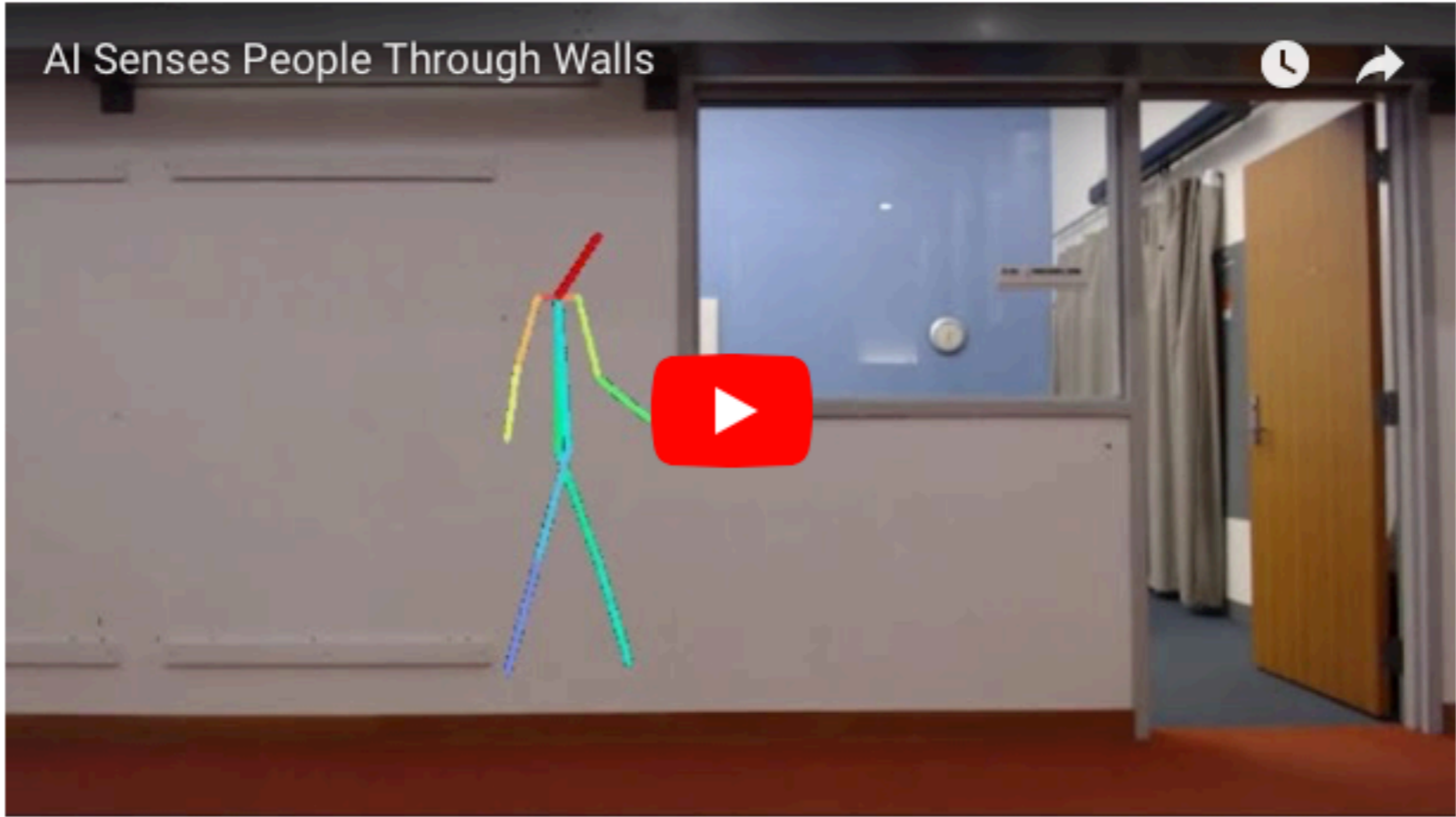
IDEAL S.D. $\rightarrow W_{j+1} = W_j + \mu(-\hat{v})$
 PRACTICAL S.D. $\rightarrow W_{j+1} = W_j + \mu(-\hat{v})$
 $W_{j+1} = W_j + \mu(2\epsilon_j X_j)$
 $W_{j+1} = W_2 + 2\mu \epsilon_j X_j$
 $\epsilon_j = d_j - X_j^T W$





Deep Learning Cars

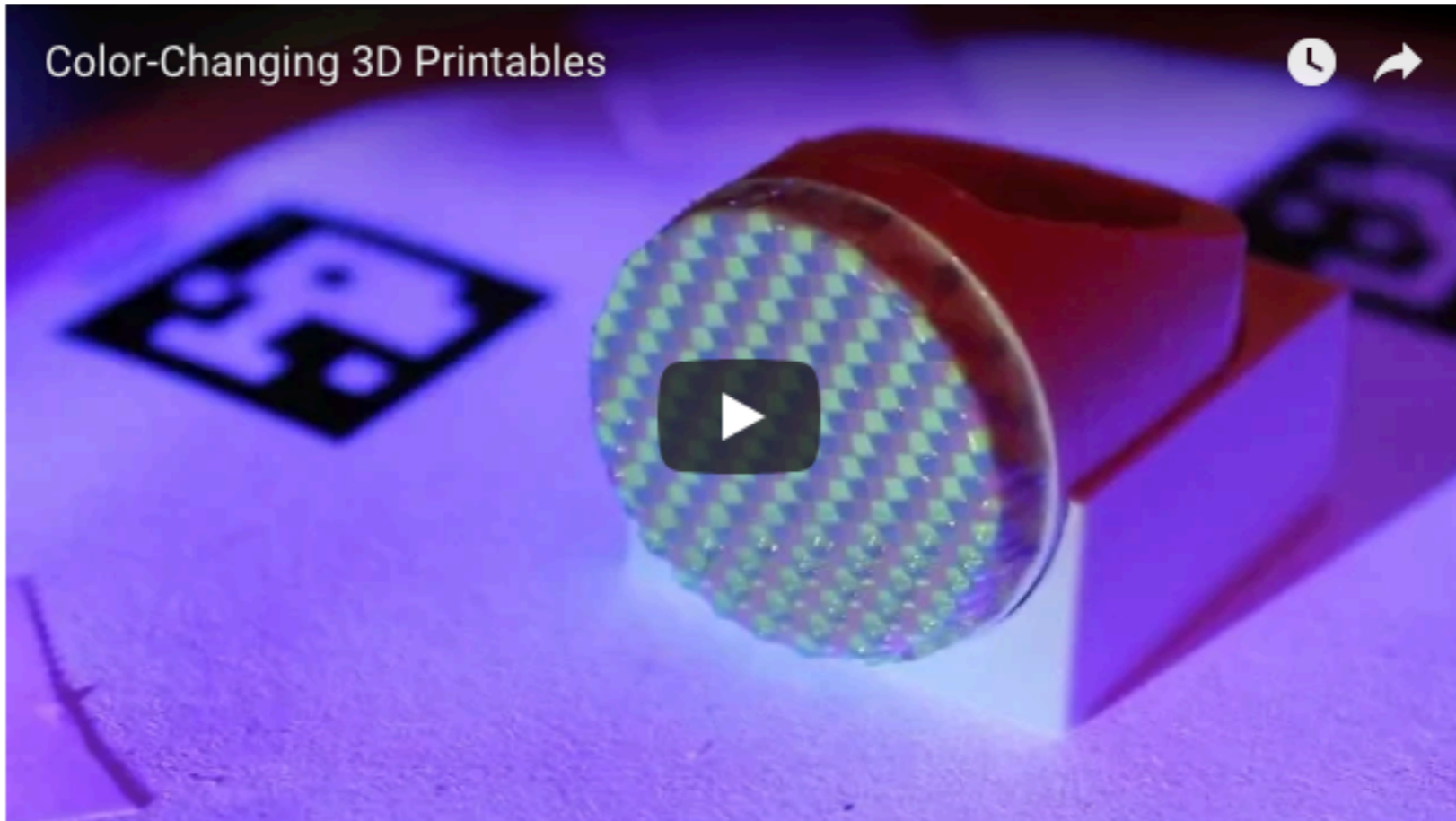
AI Senses People Through Walls



Editing Music in Videos Using AI



Color-Changing 3D Printables



AT CSAIL WE'RE INVENTING THE FUTURE OF

AI & Machine Learning

Systems & Networking



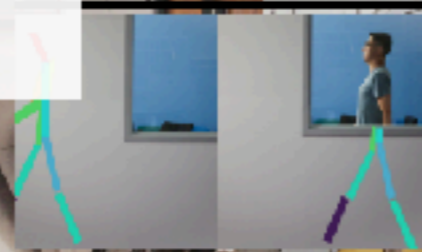
An AI for editing music in videos

107 People →
63 Projects →
24 Groups →



MIT professor wins Association for Computing Machinery Prize in Computing

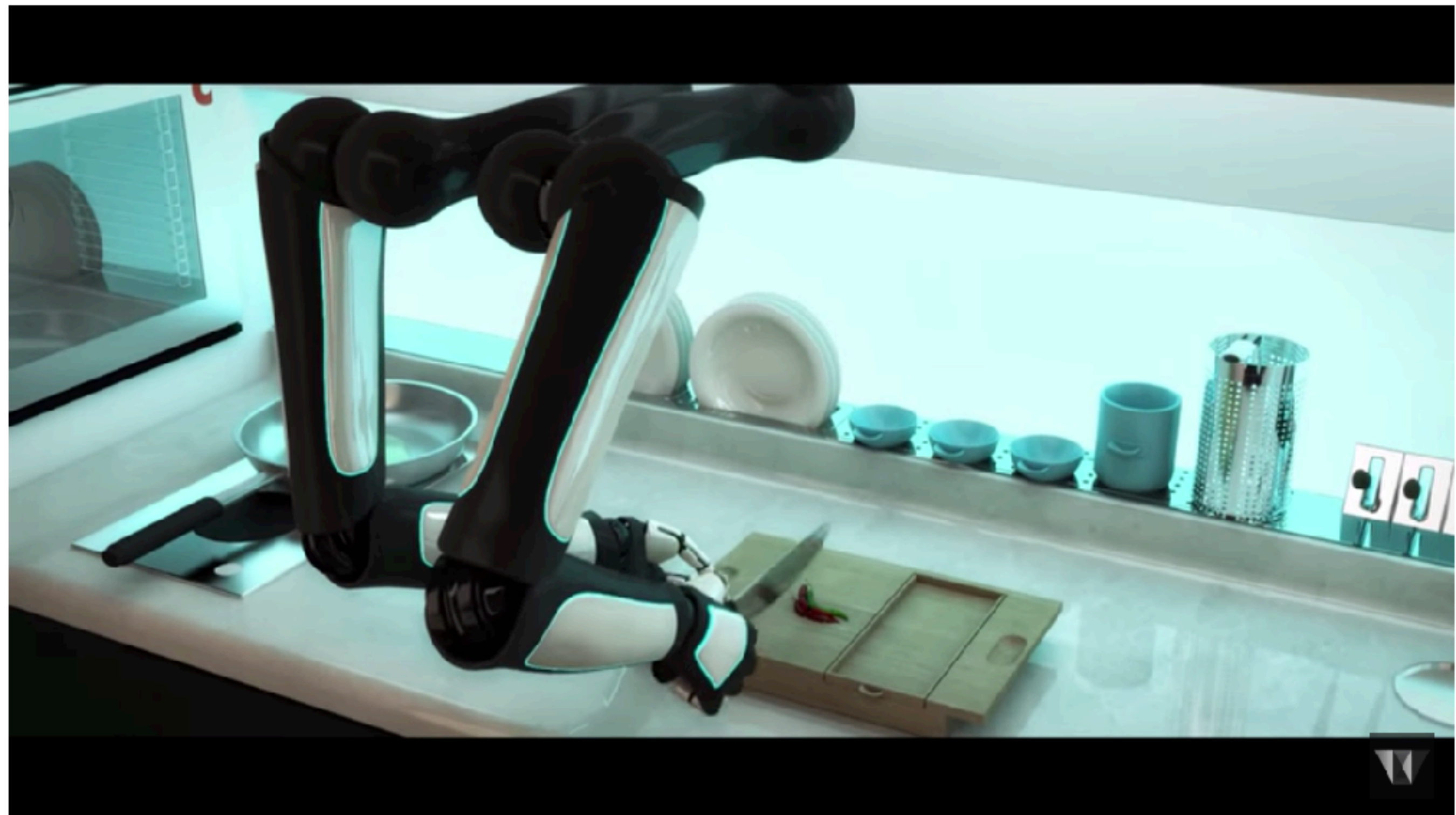
34 People →
42 Projects →
16 Groups →

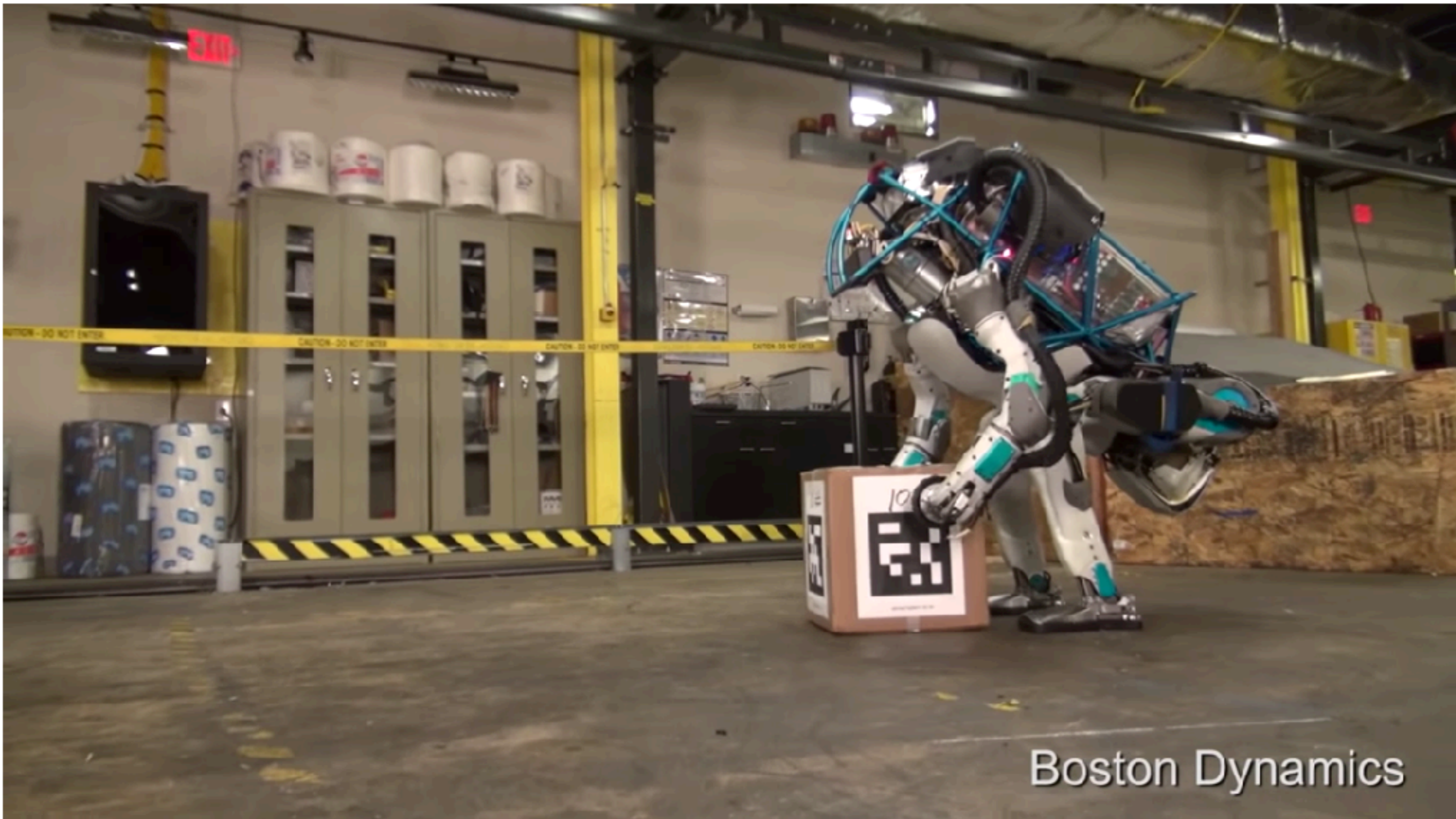


Artificial intelligence senses people through walls



Removing health-care barriers and boundaries





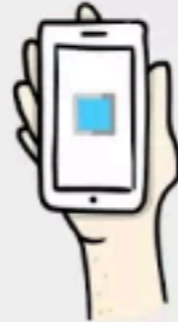
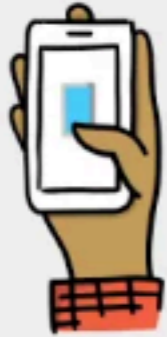
Atlas, The Next Generation



Making every phone smarter with Federated Learning

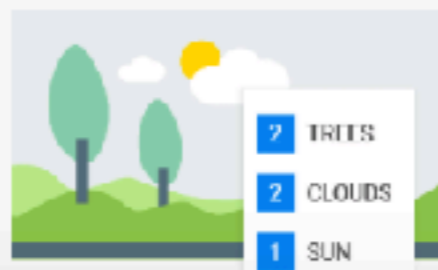
稍後觀看

分享



Try the API

Drag image file here or
Browse from your computer



圖片的深入分析內容

這個 API 能夠很輕易地在圖片中偵測出各種不同物件，例如花卉、動物、運輸工具，或圖片中常見的其他數千種物件類別。透過持續引進新概念並提高偵測準確度，Vision API 效能也會與時俱進。您可以透過 AutoML Vision 建立自訂模型，以凸顯圖片中

Try the API

Google, headquartered in Mountain View, unveiled the new Android phone at the Consumer Electronic Show. Sundar Pichai said in his keynote that users love their new Android phones.

ANALYZE

[See supported languages](#)



來自客戶的深入分析資訊

運用實體偵測與情緒分析功能，從電子郵件、即時通訊或社交媒體中透露出的產品反應或使用者體驗裡，擷取實用的深入分析資訊。



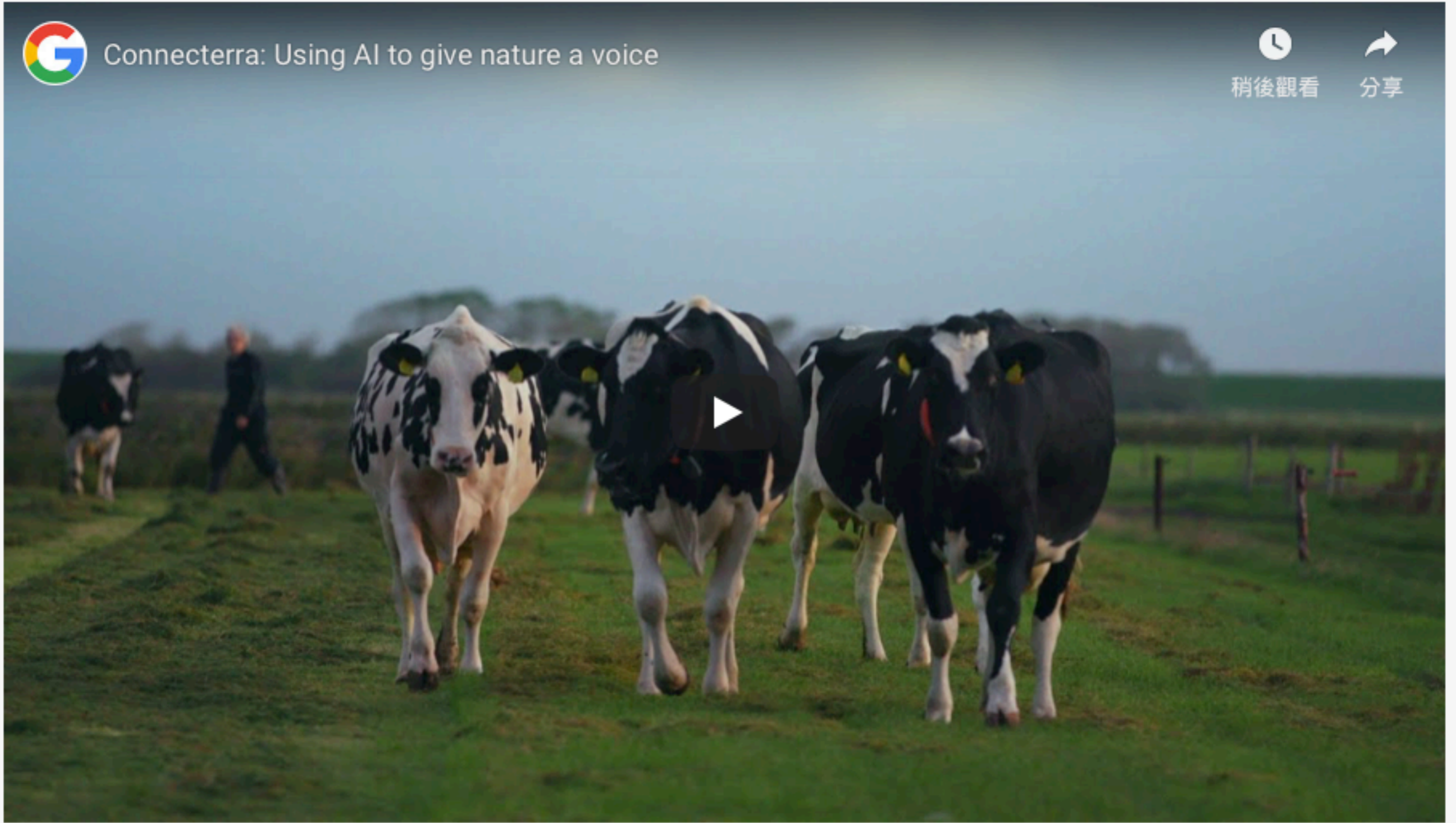
Connecterra: Using AI to give nature a voice



稍後觀看



分享

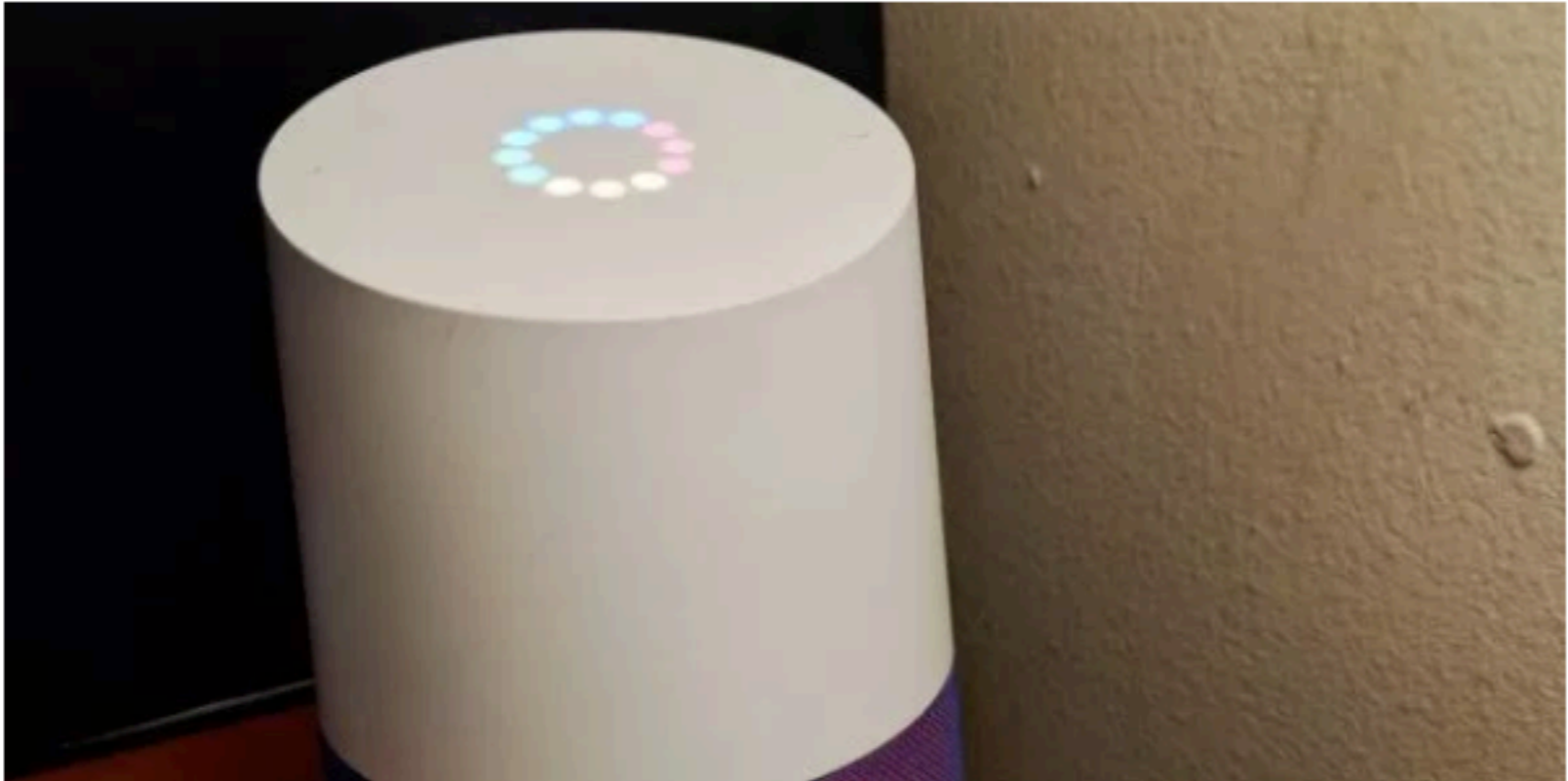


Machine learning is helping dairy farmers keep their cows healthy and make their farms more efficient.

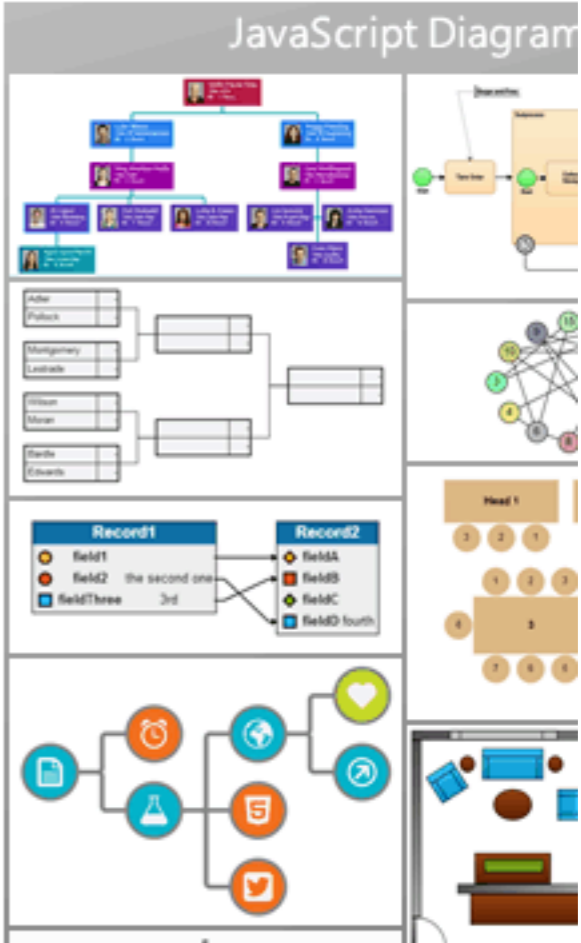
AI


Google open-sources AI that can distinguish between voices with 92% accuracy

KYLE WIGGERS @KYLE_L_WIGGERS NOVEMBER 12, 2018 12:57 PM



Above: Google Home
Image Credit: Khari Johnson





Datasets

In order to contribute to the broader research community, Google periodically releases data of interest to researchers in a wide range of computer science disciplines.